

ALU+ Ltd

NATURAL VENTILATION SYSTEMS



FOR ALL YOUR NATURAL VENTILATION REQUIREMENTS.



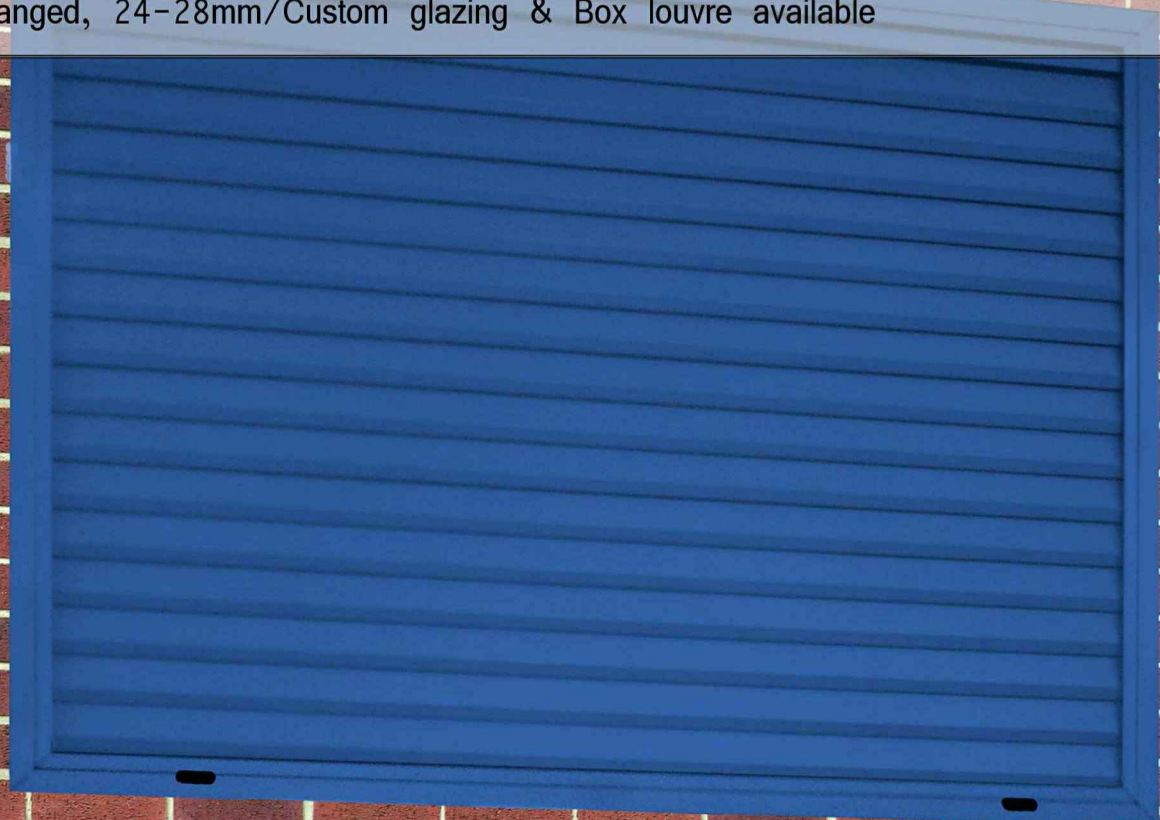
ISO9001
FM 547243



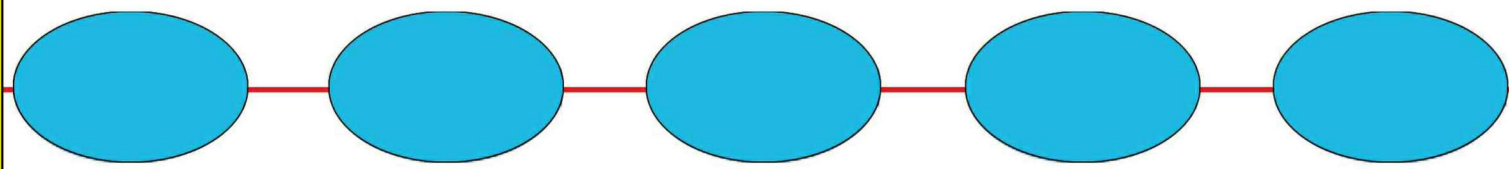
Unit 1 Maguire Industrial Estate, 219 Torrington Avenue, Coventry, CV4 9AP
Tel: 02476 421040 Fax: 02476 473777 E-mail: enquiries@alu-plus.co.uk

Adjustable Louvre System - ALS 50

Flanged, 24-28mm/Custom glazing & Box louvre available



NEW PRODUCT



ALS50 - Adjustable Louvre System:

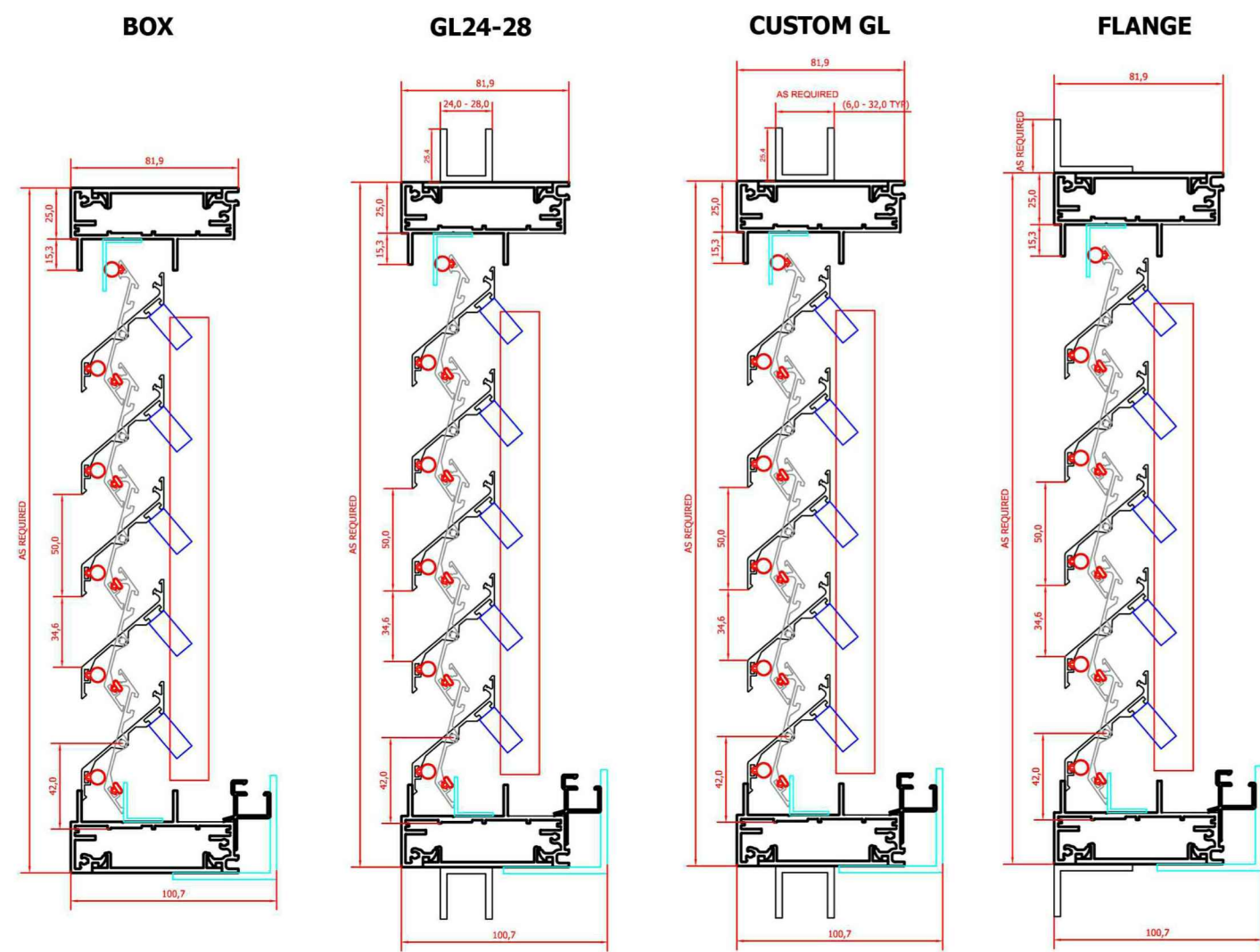
- Fitting Options:**
- FL - Flanged louvre for aperture fixing.
 - Custom FL - Custom flanged louvre for aperture fixing.
 - GL24 - Glazed-In louvre for 24mm glazing.
 - GL28 - Glazed-In louvre for 28mm glazing.
 - Custom GL - Glazed-In louvre for custom glazing.
 - Box - Box louvre for inset fitting.

- Technical Details:**
- Blade pitch: 50mm
 - Blade height: 58mm
 - Blade depth: 40.2mm
 - Flanged rebate size: 25.4mm as standard
 - Custom flange rebate size: To suit application
 - Glazing leg length: GL24-28 - 25.4mm
 - Visual free area: 69%

- Finishing:**
- Natural anodised 15-22micron.
 - Polyester powder coated - BS6496.
 - Powder coating in any RAL or B/S colour available.
 - Thickness of powder coating 40 micron minimum.

- Manufacture:**
- Made to measure, max manufacturing size of 1200 (W) x 2200mm (H)
 - Water drainage channel fitted to the rear of the louvre.
 - Fibre glass insect/bird mesh fitted as standard.
 - Stainless steel and gas/rodent meshes available as an option.
 - All blades fitted with suitable sealing gasket.

- Chain Link Operator Options:**
- Manual hand winder or eyelet to receive telescopic crank handle as standard.
 - Other controls available upon request.



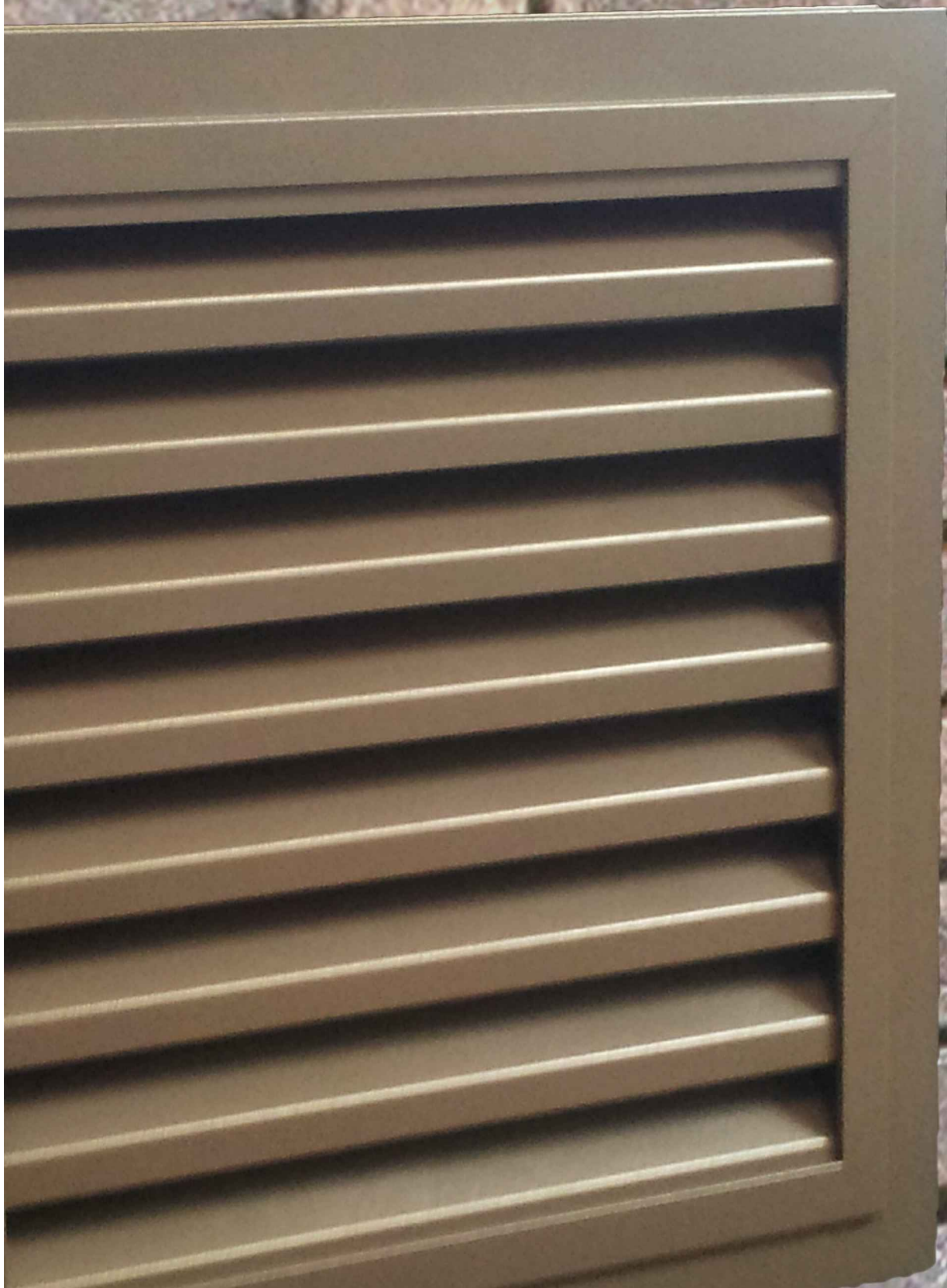
Any Std RAL/BS Colour & Various Controls Available



Unit 1 Maguire Industrial Estate, 219 Torrington Avenue, Coventry, CV4 9AP
 Tel: 02476 421040 Fax: 02476 473777 E-mail: enquiries@alu-plus.co.uk

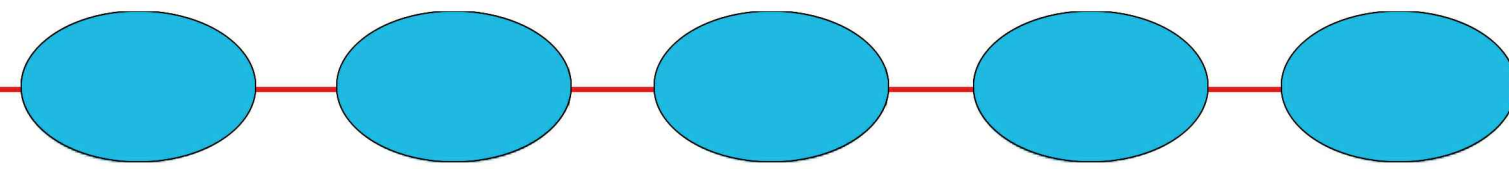
Tamper Proof Louvre - PBS 35

Flanged, 24/28mm glazing mount & Inset box available



ALU+

NEW PRODUCT



Tamper Proof Louvre:

Fitting Options:
 FL - Flanged louvre for wall aperture mounting.
 GL24 - Glazed-In louvre for 24mm mounting
 GL28 - Glazed-In louvre for 28mm mounting
 Inset Box - Louvre designed for inset fitting

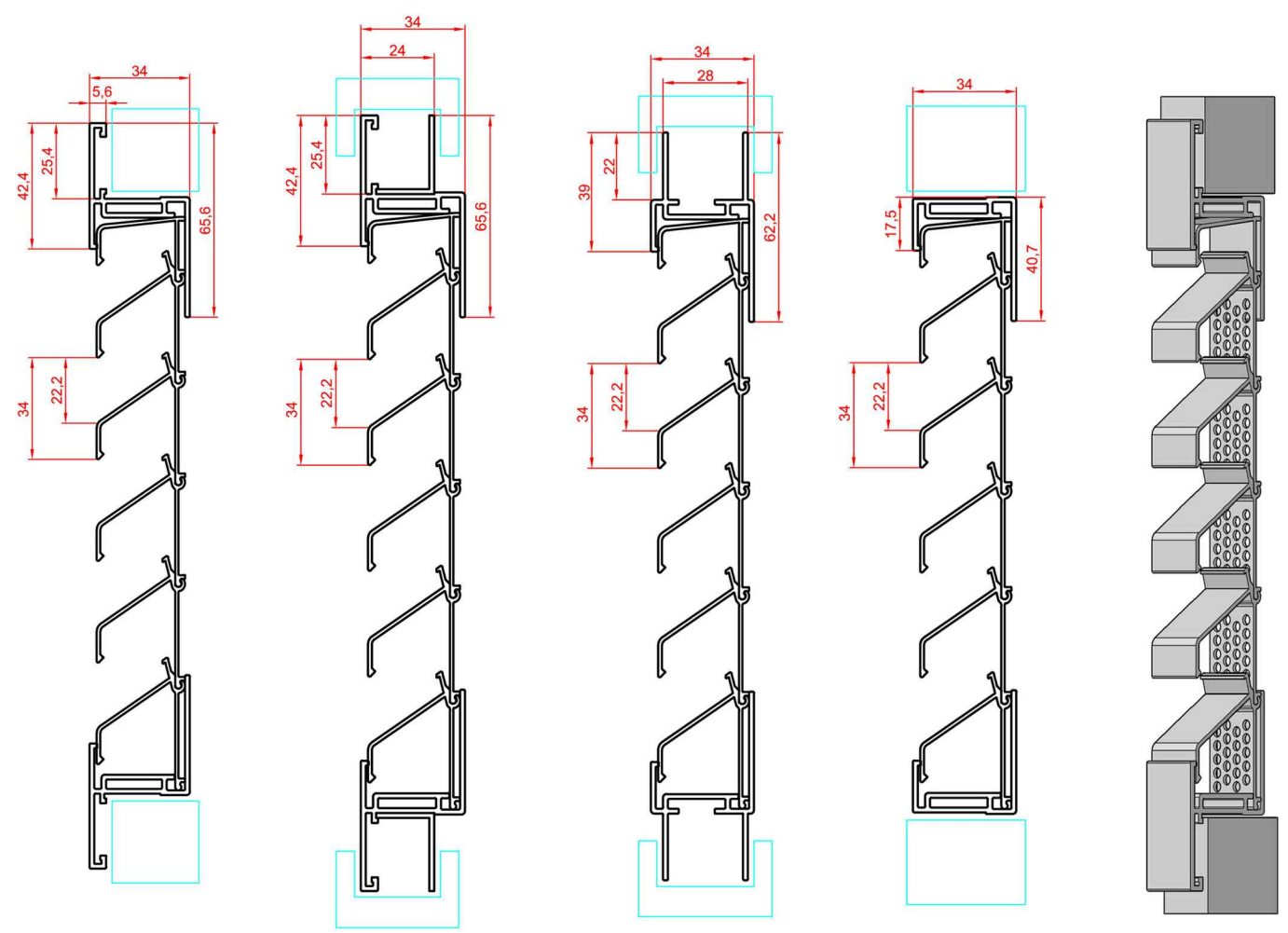
Technical Details:
 Blade Pitch: 34mm
 Blade Height: 45mm
 Blade Depth: 30mm
 Rebate Size (where applicable): FL - 25.4mm
 GL24 - 25.4mm
 GL28 - 22mm

Visual Free Area: 64%

Finishing:
 Natural anodised: 15 to 22 micron, other shades possible
 Powdercoated in any RAL or BS finish: 40 microns (min)

Manufacture:
 Made to measure
 Bar length profile for self assembly
 A reinforced support for louvres wider than 1000mm
 Integral insect mesh (3.4mm diameter aperture)

Options:
 Insulation and blanking panels - any thickness
 Rectangular, Triangular, Angled and Trapezoidal shape options
 Plenum boxes



Any Angled Shape, Any Size, Any Colour.



Unit 1 Maguire Industrial Estate, 219 Torrington Avenue, Coventry, CV4 9AP
 Tel: 02476 421040 Fax: 02476 473777 E-mail: enquiries@alu-plus.co.uk

ALU+

Custom Louvres

Flanged, glazing mount and surface mount available

ALU+

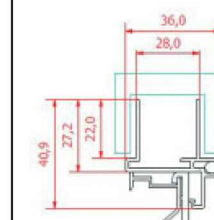
CUSTOM LOUVRE:

FITTING OPTIONS:

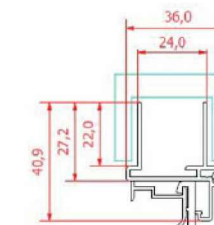
- FL - FLANGED LOUVRE FOR WALL APERTURE MOUNTING.
 - GL24 - GLAZED-IN LOUVRE FOR 24MM GLAZING.
 - GL28 - GLAZED-IN LOUVRE FOR 28MM GLAZING.
- PLEASE NOTE, CIRCULAR LOUVRE ARE ONLY AVAILABLE IN SLS34

AVAILABLE IN 34, 50 AND 75MM PITCHED BLADE SYSTEMS

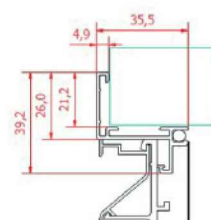
28mm glazed fitting detail



24mm glazed fitting detail



Flange fitting detail



ANY SHAPE, ANY SIZE, ANY COLOUR.



UNIT 1 MAGUIRE INDUSTRIAL ESTATE, 219 TORRINGTON AVENUE, COVENTRY, CV4 9AP
 TEL: 02476 421040 FAX: 02476 473777 EMAIL: ENQUIRIES@ALU-PLUS.CO.UK



ALU+

Louvres - SLS - 34

Flanged, glazing mount and surface mount available

ALU+



SLS-34 LOUVRE:

-FITTING OPTIONS:

- FL - FLANGED LOUVRE FOR WALL APERTURE MOUNTING.
- GL24 - GLAZED-IN LOUVRE FOR 24MM GLAZING.
- GL28 - GLAZED-IN LOUVRE FOR 28MM GLAZING.
- SM - LOUVRE DESIGNED FOR SURFACE MOUNTING.

-TECHNICAL DETAILS:

- ALUMINIUM BLADE PROFILES ARE CLIPPED INTO ALUMINIUM CLIPS.
- BLADE PITCH: 34MM
- BLADE HEIGHT: 39MM
- TOTAL DEPTH: FL AND SM:36MM
- GLAZING THICKNESS (WHERE APPLICABLE): GL24: 24MM, GL28: 28MM. (ANY GLAZING THICKNESS POSSIBLE)
- REBATE SIZE (WHERE APPLICABLE): GL24 AND GL28: 22MM
- VISUAL FREE AREA: 64%
- FREE AIR: 50.2%

-FINISHING:

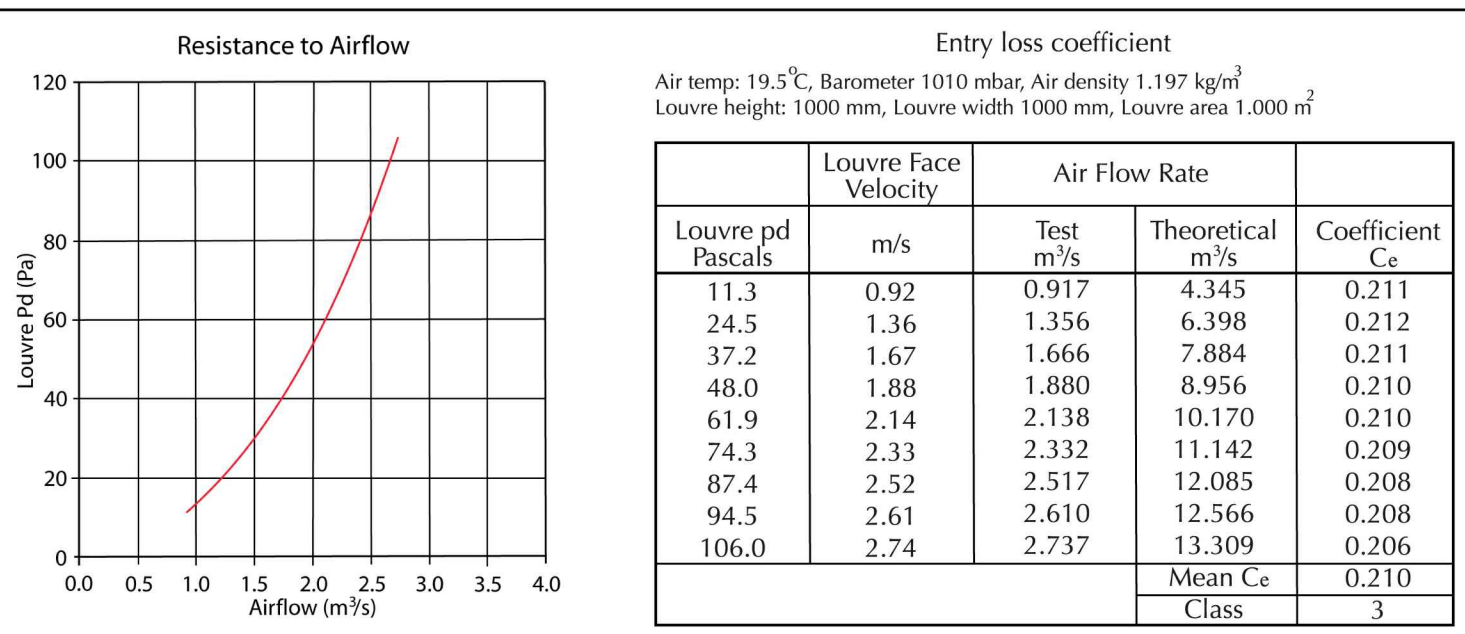
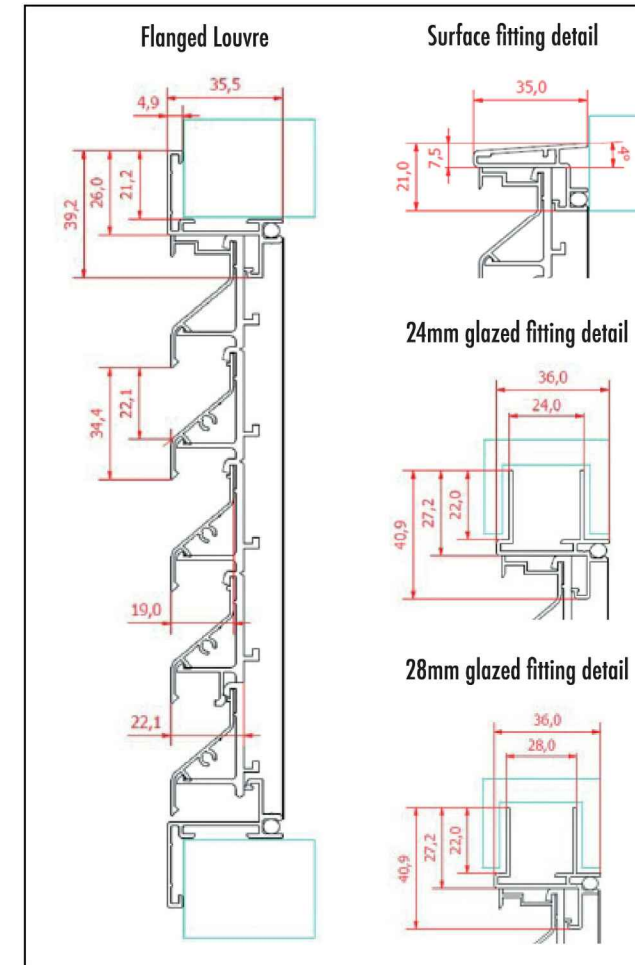
- NATURAL ANODISED: 15 TO 22 MICRON, OTHER SHADES POSSIBLE
- POWDERCOATED IN ANY RAL OR BS FINISH: 60 TO 80 MICRON.

-MANUFACTURE:

- MADE TO MEASURE, ANY SHAPE, ANY SIZE.
- BAR LENGTH PROFILE FOR SELF ASSEMBLY.
- A REINFORCED SUPPORT FOR LOUVRES WIDER THAN 700MM.
- FIBREGLASS INSECT MESH FITTED AS STANDARD
- STAINLESS STEEL AND GAS MESHES CAN BE FITTED TO THE FL AND SM

-OPTIONS:

- DRAINAGE CHANNELS.
- INSULATION AND BLANKING PANELS - ANY THICKNESS.
- ALUMINIUM, GAS AND BIRD MESH AVAILABLE AS E/O OPTION.
- RECTANGULAR, ANGLED, TRAPEZOIDAL, CIRCULAR, ARCHED SHAPE OPTIONS
- PLENUM BOXES
- INTERNAL CUT-OUTS



ANY SHAPE, ANY SIZE, ANY COLOUR.



UNIT 1 MAGUIRE INDUSTRIAL ESTATE, 219 TORRINGTON AVENUE, COVENTRY, CV4 9AP
TEL: 02476 421040 FAX: 02476 473777 EMAIL: ENQUIRIES@ALU-PLUS.CO.UK

ALU+

Louvres - MLS - 50

Flanged, glazed in and surface mounted available



ALU+

MLS-50 LOUVRE:

FITTING OPTIONS:

- FL - FLANGED LOUVRE FOR WALL APERTURE MOUNTING.
- GL24 - GLAZED-IN LOUVRE FOR 24MM GLAZING.
- GL28 - GLAZED-IN LOUVRE FOR 28MM GLAZING.
- SM - LOUVRE DESIGNED FOR SURFACE MOUNTING.

TECHNICAL DETAILS:

- ALUMINIUM BLADE PROFILES ARE CLIPPED INTO ALUMINIUM CLIPS.
- BLADE PITCH: 50MM
- BLADE HEIGHT: 67MM (SM: 39MM)
- TOTAL DEPTH: FL AND SM: 64MM
- GLAZING THICKNESS (WHERE APPLICABLE): GL24: 24MM, GL28: 28MM (ANY GLAZING THICKNESS POSSIBLE)
- REBATE SIZE (WHERE APPLICABLE): GL24 AND GL28: 22MM
- VISUAL FREE AREA: 68% (FL: 78%)

FINISHING:

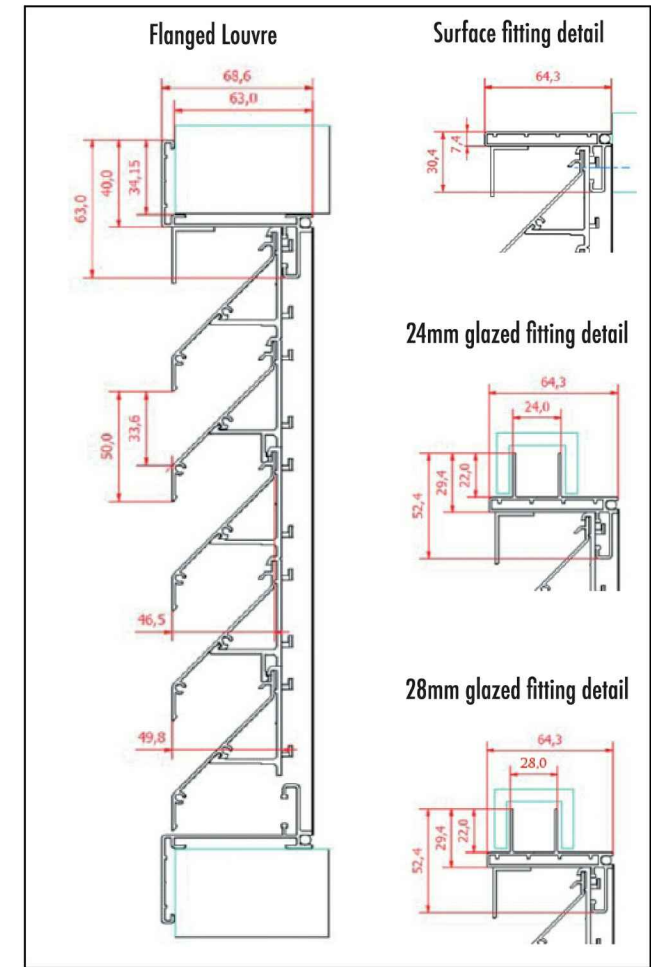
- NATURAL ANODISED: 15 TO 22 MICRON, OTHER SHADES POSSIBLE
- POWDERCOATED IN ANY RAL OR BS FINISH: 60 TO 80 MICRON.

MANUFACTURE:

- MADE TO MEASURE, ANY SHAPE, ANY SIZE.
- BAR LENGTH PROFILE FOR SELF ASSEMBLY.
- A REINFORCED SUPPORT FOR LOUVRES WIDER THAN 900MM.
- FIBREGLASS INSECT MESH FITTED AS STANDARD
- STAINLESS STEEL AND GAS MESHES CAN BE FITTED TO THE FL AND SM

OPTIONS:

- DRAINAGE CHANNELS.
- INSULATION AND BLANKING PANELS - ANY THICKNESS.
- ALUMINIUM, GAS AND BIRD MESH AVAILABLE AS E/O OPTION.
- RECTANGULAR, ANGLED, TRAPEZOIDAL, CIRCULAR, ARCHED SHAPE OPTIONS
- PLENUM BOXES
- INTERNAL CUT-OUTS



Resistance to airflow

Airflow (m/s)	Louvre Pd (Pa)
1.23	17.4
1.71	32.9
2.10	48.5
2.44	65.5
2.70	80.4
2.96	95.8
3.22	112.9
3.44	129.2

Entry loss coefficient

Air temp: 20.1 °C, Barometer 1030 mbar, Air density 1.219 kg/m³
 Louvre height: 1025 mm, Louvre width 1002 mm, Louvre area 1.027 m²

Louvre pd Pascals	Louvre Face Velocity m/s	Air Flow Rate		Coefficient Ce
		Test m ³ /s	Theoretical m ³ /s	
17.4	1.23	1.261	5.488	0.230
32.9	1.71	1.753	7.547	0.232
48.5	2.10	2.153	9.163	0.235
65.5	2.44	2.503	10.648	0.235
80.4	2.70	2.774	11.797	0.235
95.8	2.96	3.045	12.878	0.236
112.9	3.22	3.306	13.980	0.236
129.2	3.44	3.538	14.955	0.237
Mean Ce				0.235
Class				

ANY SHAPE, ANY SIZE, ANY COLOUR.



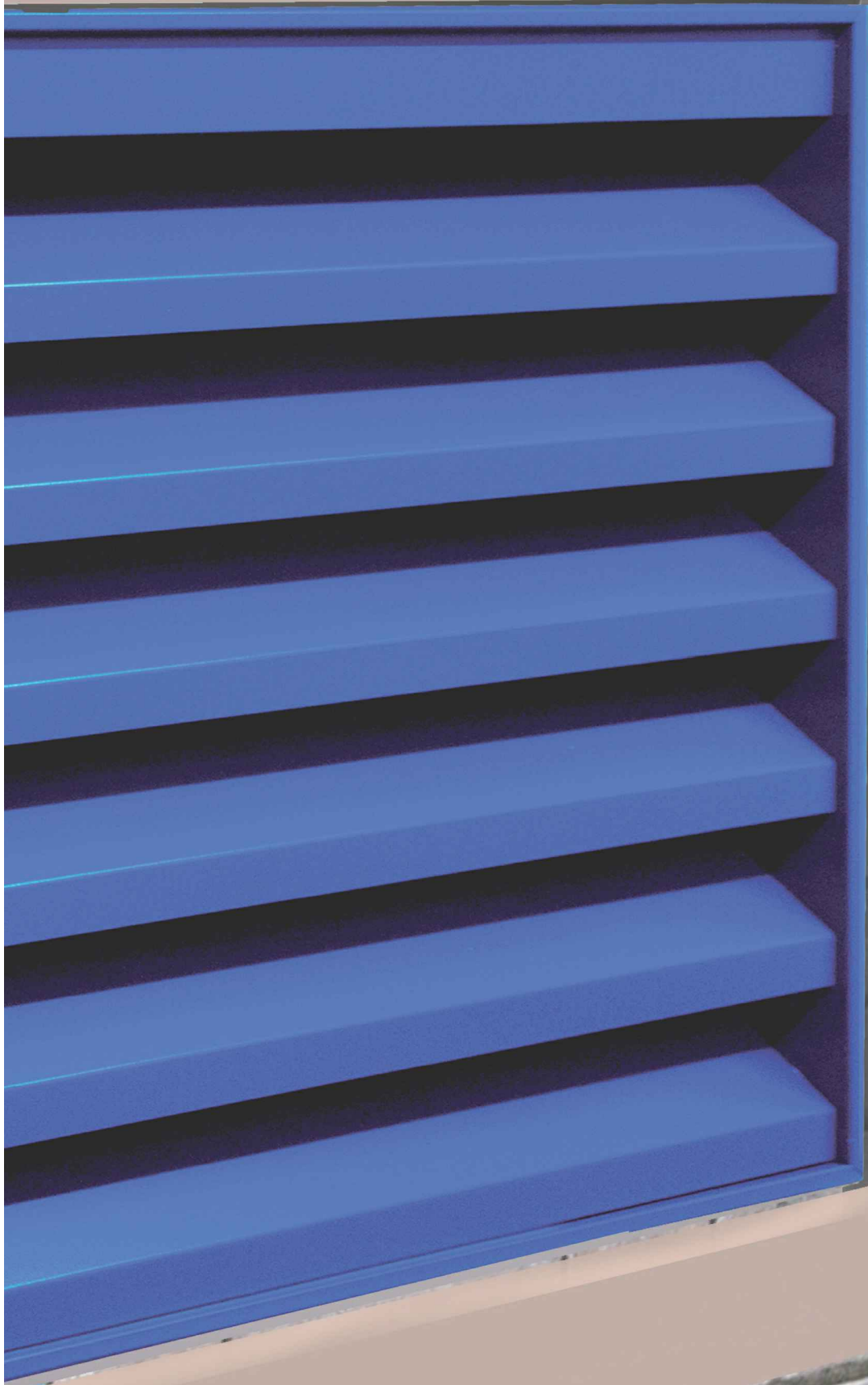
UNIT 1 MAGUIRE INDUSTRIAL ESTATE, 219 TORRINGTON AVENUE, COVENTRY, CV4 9AP
 TEL: 02476 421040 FAX: 02476 473777 EMAIL: ENQUIRIES@ALU-PLUS.CO.UK

ALU+

Louvres - LLS - 75

Flanged, glazing in and surface mounted available

ALU+



LLS-75 LOUVRE:

FITTING OPTIONS:

- FL - FLANGED LOUVRE FOR WALL APERTURE MOUNTING.
- GL24 - GLAZED-IN LOUVRE FOR 24MM GLAZING.
- GL28 - GLAZED-IN LOUVRE FOR 28MM GLAZING.
- SM - LOUVRE DESIGNED FOR SURFACE MOUNTING.

TECHNICAL DETAILS:

- ALUMINIUM BLADE PROFILES ARE CLIPPED INTO ALUMINIUM CLIPS.
- BLADE PITCH: 50MM
- BLADE HEIGHT: 107MM
- TOTAL DEPTH: FL AND SM: 88MM
- GLAZING THICKNESS (WHERE APPLICABLE): GL24: 24MM, GL28: 28MM.
- (ANY GLAZING THICKNESS POSSIBLE)
- VISUAL FREE AREA: 77%

FINISHING:

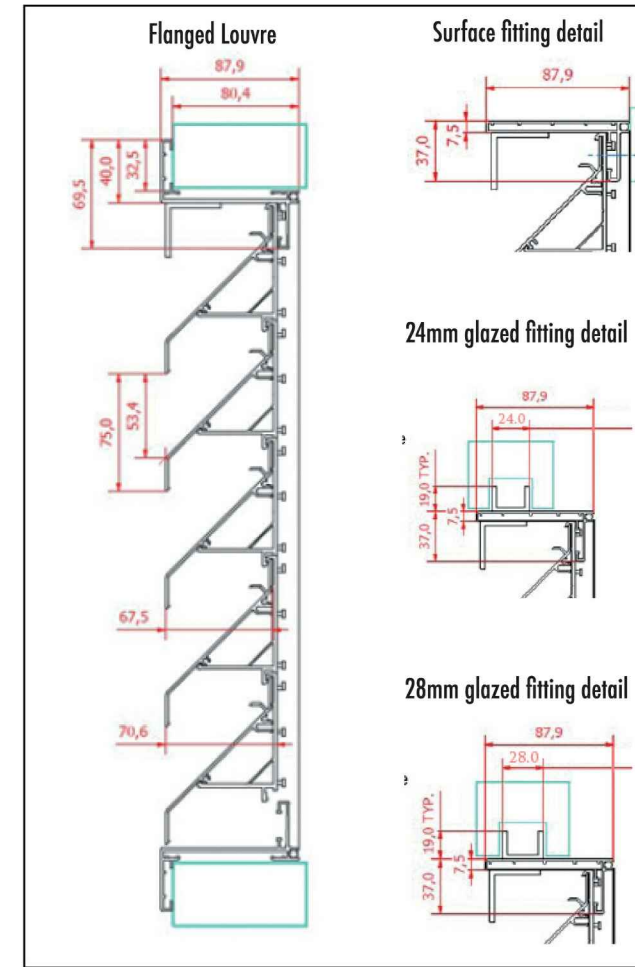
- NATURAL ANODISED: 15 TO 22 MICRON, OTHER SHADES POSSIBLE
- POWDERCOATED IN ANY RAL OR BS FINISH: 60 TO 80 MICRON.

MANUFACTURE:

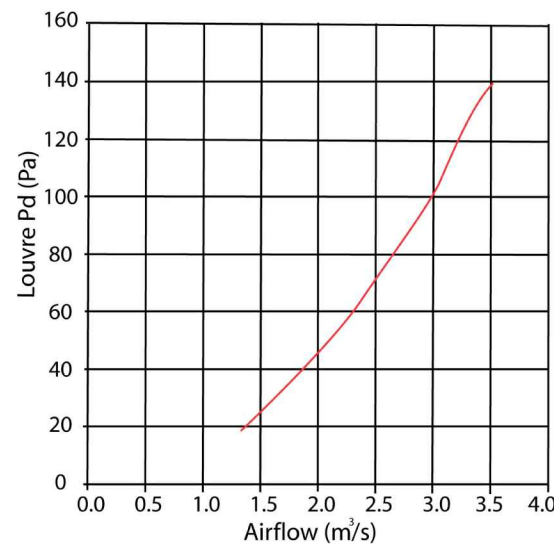
- MADE TO MEASURE, ANY SHAPE, ANY SIZE.
- BAR LENGTH PROFILE FOR SELF ASSEMBLY.
- A REINFORCED SUPPORT FOR LOUVRES WIDER THAN 900MM.
- FIBREGLASS INSECT MESH FITTED AS STANDARD
- STAINLESS STEEL AND GAS MESHES CAN BE FITTED TO THE FL AND SM

OPTIONS:

- DRAINAGE CHANNELS.
- INSULATION AND BLANKING PANELS - ANY THICKNESS.
- ALUMINIUM, GAS AND BIRD MESH AVAILABLE AS E/O OPTION.
- RECTANGULAR, ANGLED, TRAPEZOIDAL, CIRCULAR, ARCHED SHAPE OPTIONS
- PLENUM BOXES
- INTERNAL CUT-OUTS



Resistance to Airflow



Entry loss coefficient

Air temp: 20.1°C, Barometer 1030 mbar, Air density 1.219 kg/m³
 Louvre height: 1111 mm, Louvre width 1001 mm, Louvre area 1.112 m²

Louvre pd Pascals	Louvre Face Velocity m/s	Air Flow Rate			Coefficient Ce
		Test m³/s	Theoretical m³/s		
18.7	1.19	1.319	6.161	0.214	
36.5	1.60	1.779	8.607	0.207	
53.0	1.93	2.148	10.372	0.207	
74.1	2.29	2.547	12.264	0.208	
90.3	2.53	2.813	13.538	0.208	
106.4	2.74	3.050	14.695	0.208	
124.7	2.92	3.250	15.909	0.204	
142.0	3.16	3.515	16.977	0.207	
				Mean Ce	0.208
				Class	3

ANY SHAPE, ANY SIZE, ANY COLOUR.



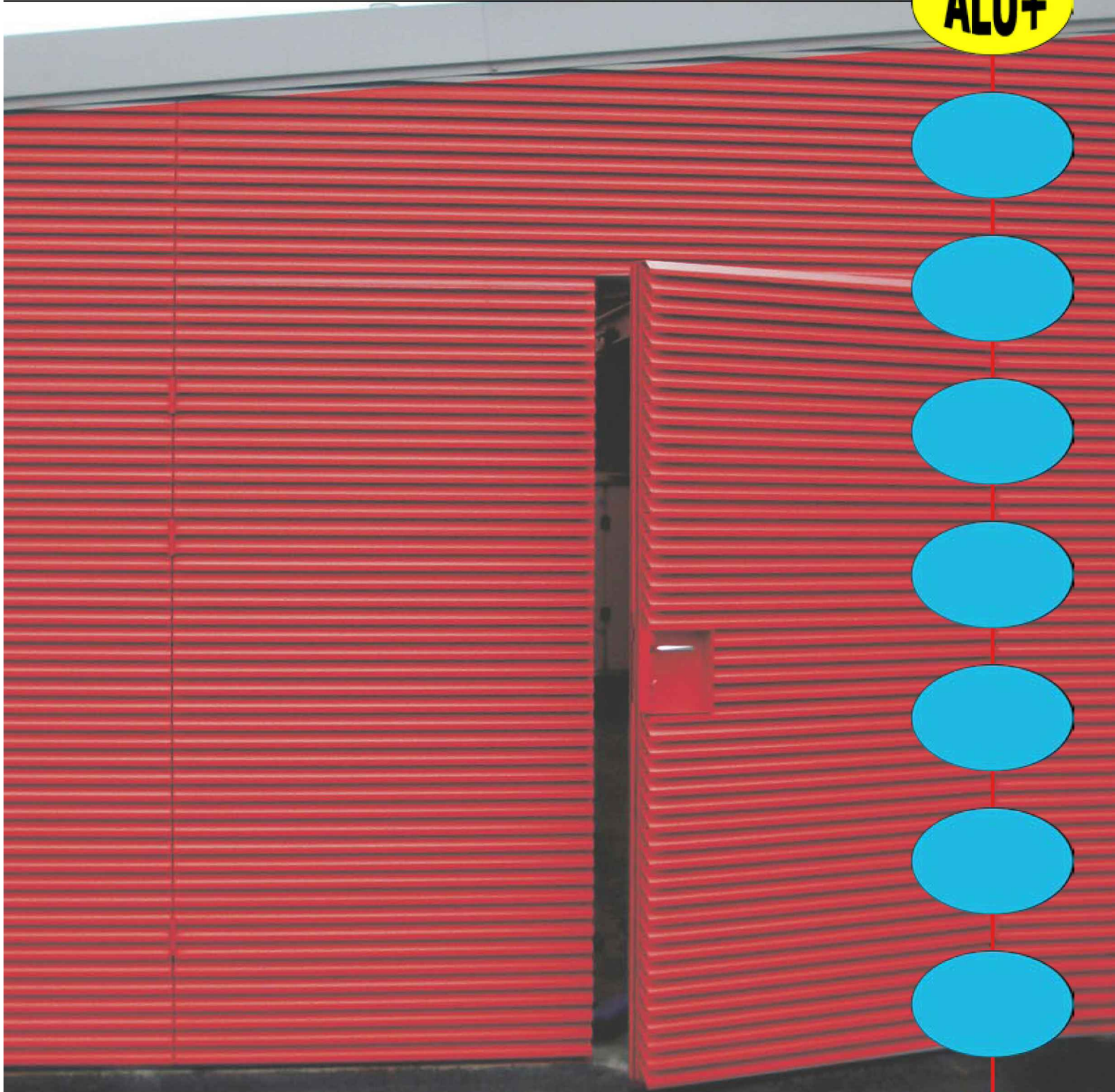
UNIT 1 MAGUIRE INDUSTRIAL ESTATE, 219 TORRINGTON AVENUE, COVENTRY, CV4 9AP
 TEL: 02476 421040 FAX: 02476 473777 EMAIL: ENQUIRIES@ALU-PLUS.CO.UK

ALU+

Continuous Louvres

Flanged, glazing mount and surface mount available

ALU+



CONTINUOUS LOUVRE:

FITTING OPTIONS:

- FL - FLANGED LOUVRE FOR WALL APPATURE MOUNTING.
- GL24 - GLAZED-IN LOUVRE FOR 24MM GLAZING.
- GL28 - GLAZED-IN LOUVRE FOR 28MM GLAZING.
- SM - LOUVRE DESIGNED FOR SURFACE MOUNTING.

TECHNICAL DETAILS:

ALUMINIUM BLADE PROFILES ARE CLIPPED INTO ALUMINIUM CLIPS.
REINFORCED SUPPORT FOR LOUVRES WIDER THAN 700MM.
AVAILABLE IN ALL ALU+ LOUVRE PROFILES

FINISHING:

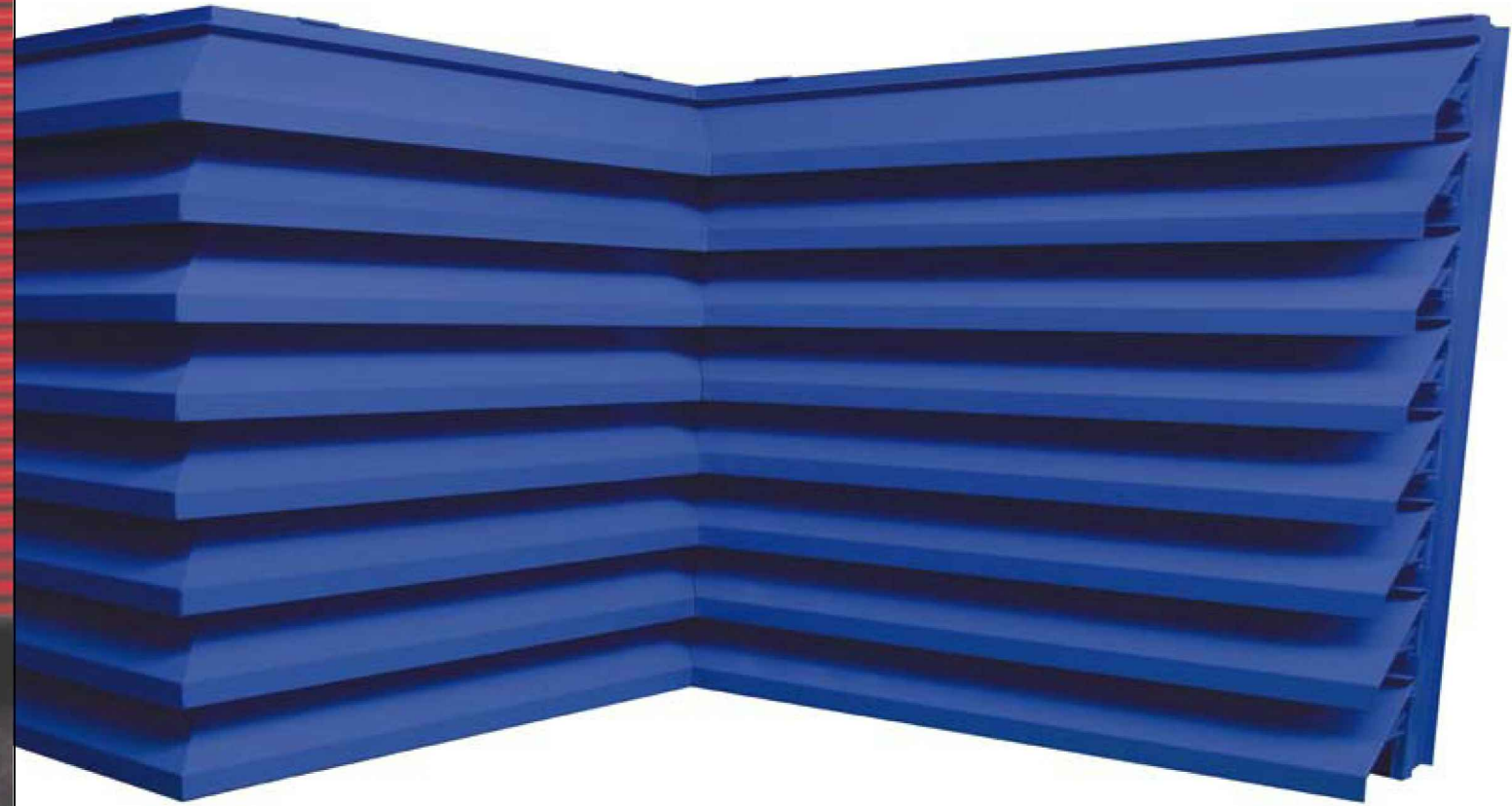
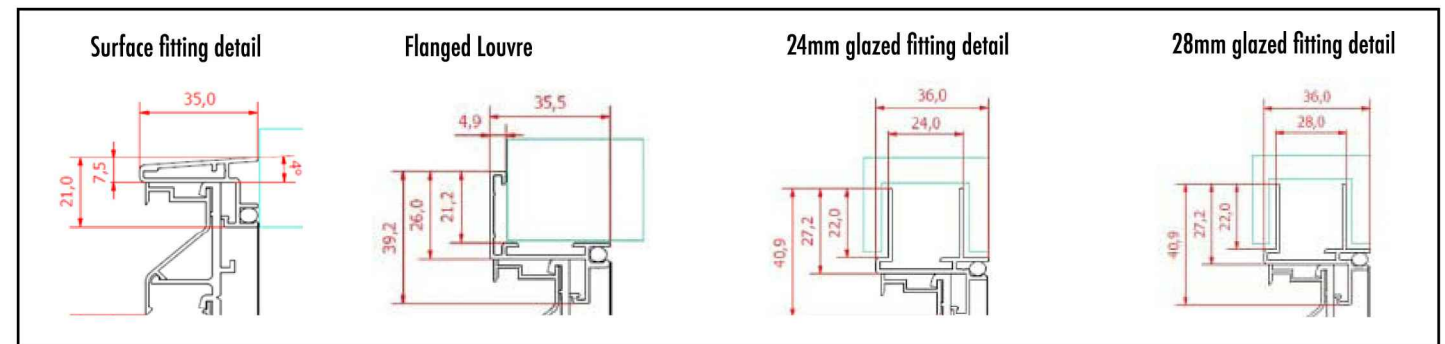
NATURAL ANODISED: 15 TO 22 MICRON, OTHER SHADES POSSIBLE
POWDERCOATED IN ANY RAL OR BS FINISH: 60 TO 80 MICRON.

MANUFACTURE:

MADE TO MEASURE, ANY SHAPE, ANY SIZE.
BAR LENGTH PROFILE FOR SELF ASSEMBLY.
FIBERGLASS INSECT MESH FITTED AS STANDARD
STAINLESS STEEL AND GAS MESHES CAN BE FITTED TO THE FL AND SM

OPTIONS:

DRAINAGE CHANNELS.
INSULATION AND BLANKING PANNELS - ANY THICKNESS.
ALUMINIUM, GAS AND BIRD MESH CAN BE FITTED AS COST OPTION.
RECTANGULAR, ANGLED, TRAPEZOIDAL, CIRCULAR, ARCHED SHAPE OPTIONS
INTERNAL CUT-OUTS



ANY SHAPE, ANY SIZE, ANY COLOUR.



UNIT 1 MAGUIRE INDUSTRIAL ESTATE, 219 TORRINGTON AVENUE, COVENTRY, CV4 9AP
TEL: 02476 421040 FAX: 02476 473777 EMAIL: ENQUIRIES@ALU-PLUS.CO.UK



ALU+